

# KEEPING YOUR GAS AND WATER SUPPLY ON

*UNDER-PRESSURE CONNECTIONS*



**Radius**  
**Subterra**



JAN 2022



**WE KEEP YOUR  
WATER AND GAS  
SUPPLY ON!**

## UNDER-PRESSURE CONNECTIONS

When you need to make a connection during the construction of a new pipeline, or retrospectively on an existing live main to alter or extend your pipeline network or make an emergency repair, traditional flow-stop methods can be expensive and time consuming.

Our expertise is making connections to live mains on PE or metallic pipeline networks using specially designed branch saddles and under-pressure tees, saving you time and installation costs, with zero interruption and reduced disruption to your customers.

We will perform pressure tests and commissioning of the new connection, validated in our reporting system, ensuring the integrity of the new connection, and giving you peace of mind!

- One-stop national service
- Saving time and costs on operations
- Minimal disruption to customers
- Small excavations
- QA system and reporting thanks to bespoke data capture technology

## PE PIPELINE CONNECTIONS

We have continuously innovated and invested in a market leading range of electrofusion branch saddles that avoid using expensive pipeline squeeze-off methods.

Sized to fit your PE pipeline, our electrofusion branch saddles are approved to all major industry standards: EN 12201, EN 1555 or GIS/PL2-4. For individual branch saddles approvals please contact Radius Subterra.

- Single welded joint with increased fusion integrity
- Fits any pipe size, standard or bespoke up to 1200mm PE pipelines
- Up to 300mm outlet, the largest in the UK
- Reduces risk of third-party damage
- Security strap for maximum fitting integrity
- Reduced excavation size
- Approved for gas and water applications
- Single welded joint with increased fusion integrity

### Exclusive range of equal tee branch saddles:

**90x90mm**  
**125x125mm**  
**180x180mm**  
**250x250mm**



## METALLIC PIPELINE CONNECTIONS

Our expertise in working with metallic pipes means that we can offer under-pressure drillings to your metallic pipeline, allowing you to carry out work on your live gas or water pipeline, without interruption of supply to your customers.

Our under pressure drilling service can be carried out on all gas and water cast iron, ductile iron, steel pipeline and asbestos cement pipelines, with minimum excavation and reduced installation time.

- Approved for gas and water applications
- Under pressure tees with off-takes from 80mm up to 600mm
- Callipering service
- Supply and fit
- Drill only service available
- Site report complete with pressure test

### Exclusive range of equal tee branch saddles from 3" to 24"

Pipe dia inch	Flanged outlet size										Clamping range mm
	DN80	DN100	DN150	DN200	DN250	DN300	DN400	DN450	DN500	DN600	
3"	<b>3"x80</b>	-	-	-	-	-	-	-	-	-	85-114
4"	4"x80	<b>4"x100</b>	-	-	-	-	-	-	-	-	112-129
6"	6"x80	6"x100	<b>6"x150</b>	-	-	-	-	-	-	-	165-188
8"	8"x80	8"x100	8"x150	<b>8"x200</b>	-	-	-	-	-	-	216-240
10"	10"x80	10"x100	10"x150	10"x200	<b>10"x250</b>	-	-	-	-	-	269-294
12"	12"x80	12"x100	12"x150	12"x200	12"x250	<b>12"x300</b>	-	-	-	-	320-341



## Metallic connections Water and wastewater

### 257/30

- Suitable for all ferrous pipes
- BS EN 1092-2, BS10 or ANSI flange drillings
- Branch sizes DN80-300mm
- Approved to WIS-4-52-01/ Reg 31 compliant

Pipe dia Inch	Flanged outlet size										Clamping range mm
	DN80	DN100	DN150	DN200	DN250	DN300	DN400	DN450	DN500	DN600	
14"	14"x80	14"x100	14"x150	14"x200	14"x250	14"x300	-	-	-	-	374-394
16"	16"x80	16"x100	16"x150	16"x200	16"x250	16"x300	<b>16"x400</b>	-	-	-	422-442
18"	18"x80	18"x100	18"x150	18"x200	18"x250	18"x300	18"x400	<b>18"x450</b>	-	-	485-505
20"	20"x80	20"x100	20"x150	20"x200	20"x250	20"x300	20"x400	20"x450	<b>20"x500</b>	-	503-523
24"	24"x80	24"x100	24"x150	24"x200	24"x250	24"x300	24"x400	24"x450	24"x500	<b>24"x600</b>	629-655



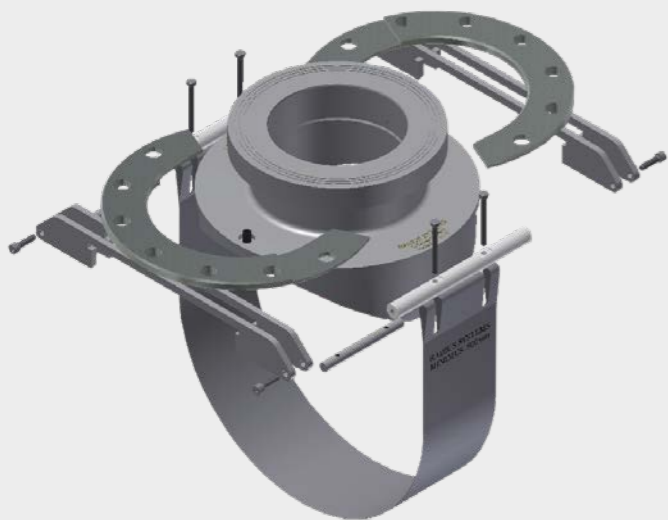
## Metallic connections Water and wastewater

### 215/30

- Suitable for under pressure branch connections on all ferrous pipes, PVC and AC
- Branch sizes DN50-DN600
- Approved to EN 1092-2 (ISO 7005-2) / Reg 31 compliant

## PE connections Water and wastewater

- Equal tee branch saddles 90mm to 250mm
- Remove the need for costly squeeze-off operations
- Approved to EN 12201.
- Outlets up to 300 mm available



Pipe dia mm	Flanged outlet size					Spigot outlet size 90 mm
	DN80	DN100	DN150	DN250	DN300	
90	90x90	-	-	-	-	-
110	110x80	110x100	-	-	-	-
125	125x80	125x125	-	-	-	-
140	140x80	140x100	-	-	-	-
160	160x80	160x100	-	-	-	-
180	180x80	180x100	180x180	-	-	-
200	200x80	200x100	-	-	-	-
225	225x80	225x100	-	-	-	-
250	250x80	250x100	250x150	250x250	-	250x90
268	268x80	-	268x150	-	-	268x90
280	280x80	-	280x150	-	-	280x90
315	315x80	315x100	315x150	315x250	-	315x90
355	355x80	355x100	355x150	355x250	355x300	355x90
400	400x80	400x100	400x150	400x250	400x300	400x90
440	-	-	-	-	-	440x90
450	450x80	-	450x150	450x250	450x300	450x90
469	-	-	-	-	-	469x90
500	500x80	-	500x150	500x250	500x300	500x90
560	560x80	-	560x150	560x250	560x300	560x90
630	630x80	-	630x150	630x250	630x300	630x90
710	710x80	-	710x150	710x250	710x300	710x90
800	800x80	-	800x150	800x250	800x300	800x90
900	900x80	-	900x150	900x250	900x300	900x90
1000	1000x80	-	1000x150	1000x250	1000x300	1000x90



**ZERO  
INTERRUPTION**

Pipe dia inch	Flanged outlet size										Clamping range
	DN80	DN100	DN150	DN200	DN250	DN300	DN400	DN450	DN500	DN600	mm
3"	<b>3"x80</b>	-	-	-	-	-	-	-	-	-	85-114
4"	4"x80	<b>4"x100</b>	-	-	-	-	-	-	-	-	112-129
6"	6"x80	6"x100	<b>6"x150</b>	-	-	-	-	-	-	-	165-188
8"	8"x80	8"x100	8"x150	<b>8"x200</b>	-	-	-	-	-	-	216-240
10"	10"x80	10"x100	10"x150	10"x200	<b>10"x250</b>	-	-	-	-	-	269-294
12"	12"x80	12"x100	12"x150	12"x200	12"x250	<b>12"x300</b>	-	-	-	-	320-341



## Metallic connections

Gas

### 257/31

- Suitable for all ferrous pipes
- BS EN 1092-2, BS10 or ANSI flange drillings
- Branch sizes DN80-300mm
- Approved to GIS/LC8-4

Pipe dia inch	Flanged outlet size										Clamping range
	DN80	DN100	DN150	DN200	DN250	DN300	DN400	DN450	DN500	DN600	mm
14"	14"x80	14"x100	14"x150	14"x200	14"x250	14"x300	-	-	-	-	374-394
15"	15"x80	15"x100	15"x150	15"x200	15"x250	15"x300	-	-	-	-	395-415
16"	16"x80	16"x100	16"x150	16"x200	16"x250	16"x300	<b>16"x400</b>	-	-	-	422-442
18"	18"x80	18"x100	18"x150	18"x200	18"x250	18"x300	18"x400	<b>18"x450</b>	-	-	485-505
20"	20"x80	20"x100	20"x150	20"x200	20"x250	20"x300	20"x400	20"x450	<b>20"x500</b>	-	503-523
24"	24"x80	24"x100	24"x150	24"x200	24"x250	24"x300	24"x400	24"x450	24"x500	<b>24"x600</b>	629-655



## Metallic connections

Gas

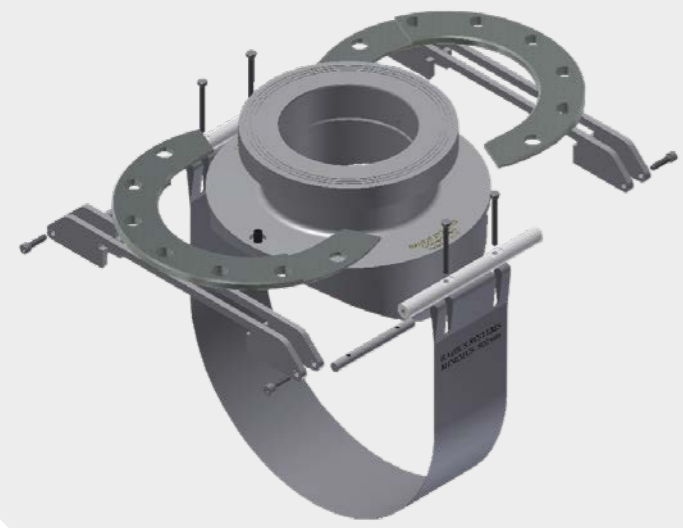
### 215/31

- Suitable for under pressure branch connections on all ferrous pipes, PVC and AC
- Branch sizes DN50-DN600
- Approved to GIS/LC8-4

# PE connections

Gas

- Equal tee branch saddles 90mm to 250mm
- Remove the need for costly squeeze-off operations
- Approved for use by the Gas Distribution Networks (GDNs)
- Approved to GIS/PL2-4 or EN1555
- Imperial branch saddle connections, 4" to 8"
- Outlets up to 300 mm available



Pipe dia Inch /mm	Flanged outlet size					Spigot outlet size	
	DN80	DN100	DN150	DN250	DN300	90 mm	125 mm
4"	-	<b>4"x100</b>	-	-	-	-	-
6"	-	6"x100	-	-	-	-	-
8"	-	-	8"x150	-	-	-	-
90	<b>90x90</b>	-	-	-	-	-	-
125	125x80	<b>125x125</b>	-	-	-	-	-
180	180x80	180x100	<b>180x180</b>	-	-	-	180x125
200	-	-	200x150	-	-	-	-
213	-	-	213x150	-	-	-	-
250	250x80	250x100	250x150	<b>250x250</b>	-	250x90	-
268	268x80	-	268x150	-	-	268x90	-
280	280x80	-	280x150	-	-	280x90	-
315	315x80	315x100	315x150	315x250	-	315x90	-
355	355x80	355x100	355x150	355x250	355x300	355x90	-
400	400x80	400x100	400x150	400x250	400x300	400x90	-
440	440x80	-	440x150	440x250	440x300	440x90	-
450	450x80	-	450x150	450x250	450x300	450x90	-
469	469x80	-	469x150	469x250	469x300	469x90	-
500	500x80	-	500x150	500x250	500x300	500x90	-
560	560x80	-	560x150	560x250	560x300	560x90	-
630	630x80	-	630x150	630x250	630x300	630x90	-
800	-	-	800x150	800x250	800x300	-	-



**REDUCED  
DISRUPTION TO  
CUSTOMERS**







+44 (0)1773 811112  
radius.subterra@radius-systems.com  
www.radius-subterra.com

